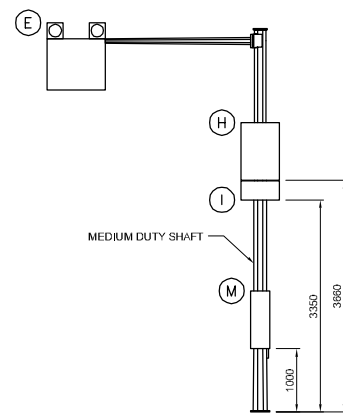
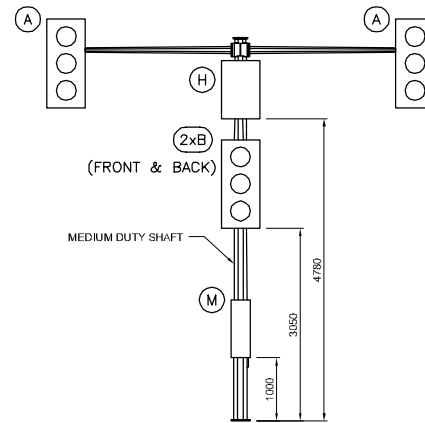


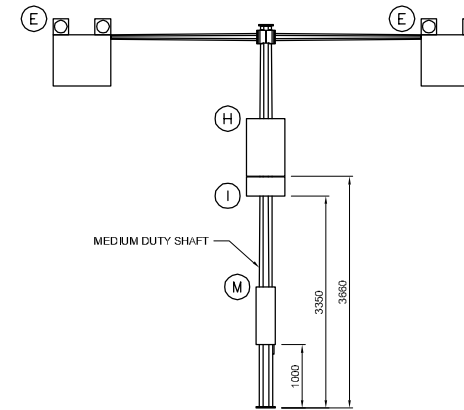
M8-Ga



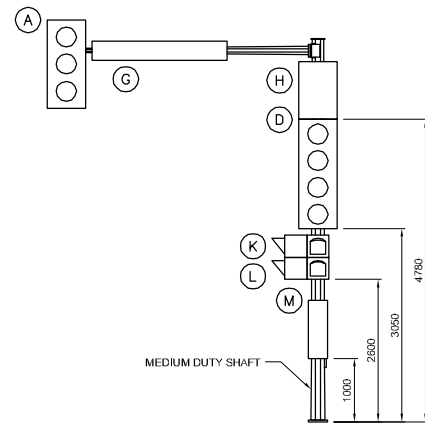
M8-Gb



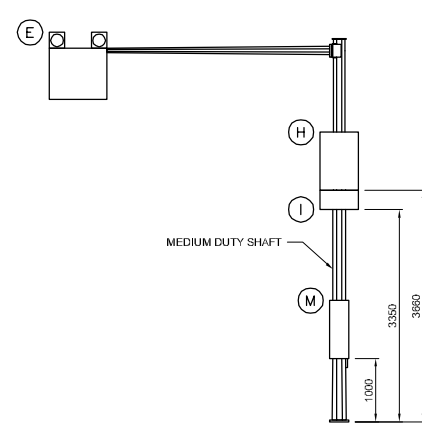
M8/8-Gc



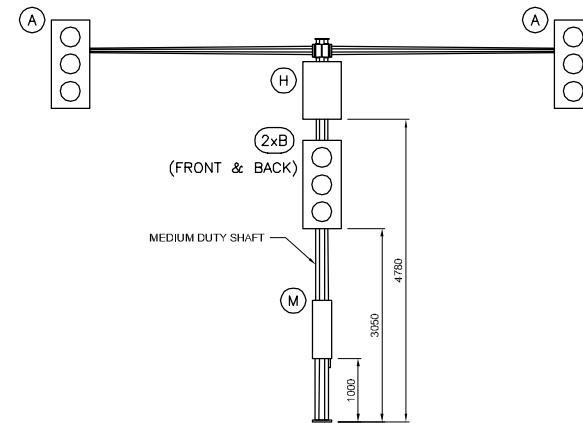
M8/8-Gd



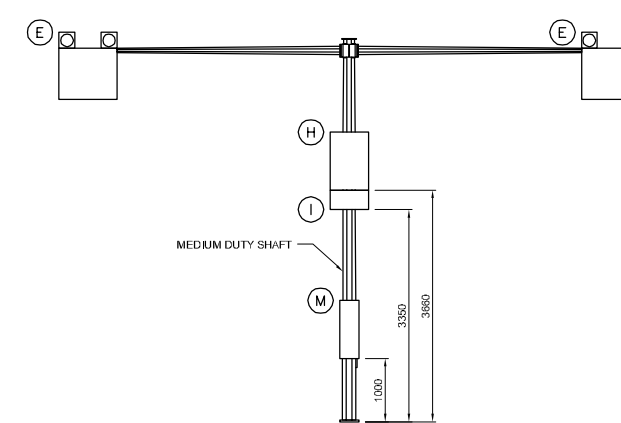
M12-Ga



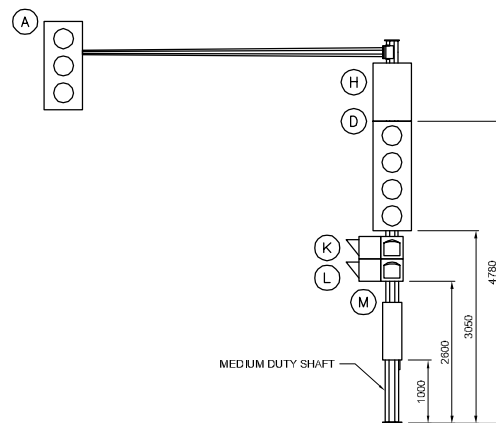
M12-Gb



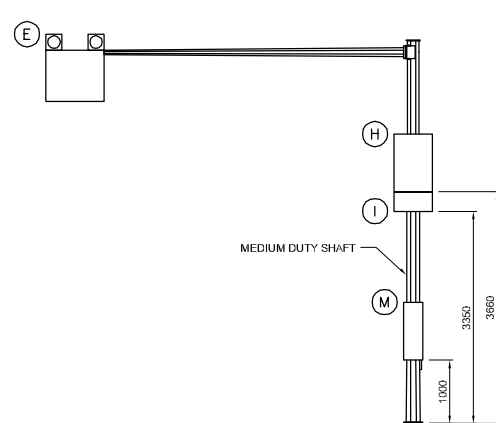
M12/12-Gc  
M12/8-Gc



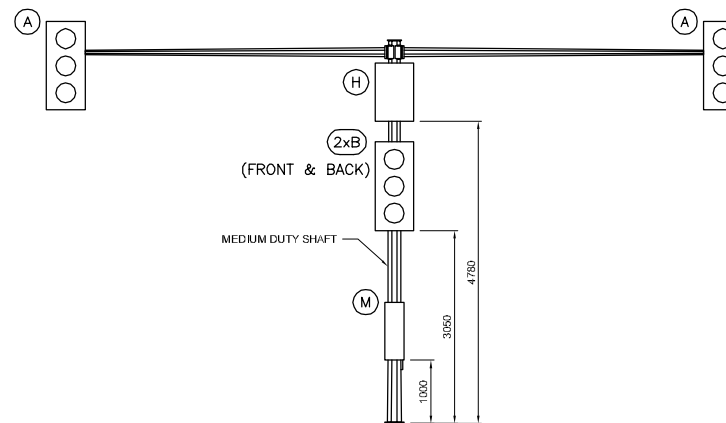
M12/12-Gd  
M12/8-Gd



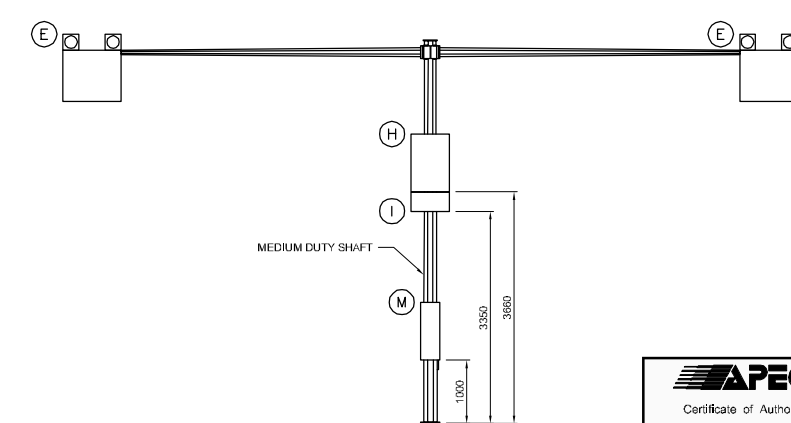
M16-Ga



M16-Gb



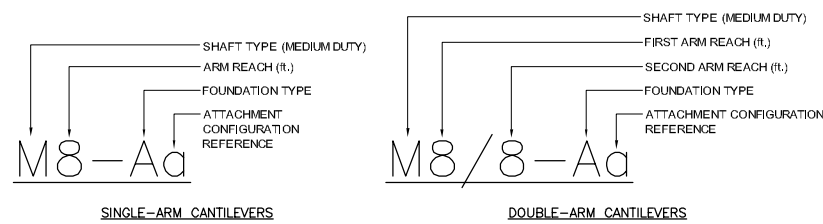
M16/16-Gc  
M16/12-Gc  
M16/8-Gc



M16/16-Gd  
M16/12-Gd  
M16/8-Gd

**NOTE:**

- ALL CONFIGURATIONS TO BE INSTALLED ON TYPE G-T BREAKAWAY BASE.
- REFER TO SHEET 2 FOR ATTACHMENT DATA.
- LOAD CONFIGURATIONS SHOWING SINGLE-ARM CANTILEVER ARM REACH TO THE LEFT, REACH TO THE RIGHT ALSO PERMITTED.



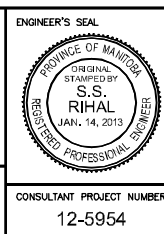
**NAMING CONVENTION**



**REDUCED DRAWING  
N.T.S.**

NO.	REVISIONS	DATE	BY	DATE
2	REVISED BY DILLON CONSULTING	1/11/14	CDW	
1	ISSUED BY DILLON CONSULTING	1/14/13	CDW	

DESIGNED BY	CDW
DRAWN BY	JGW
CHECKED BY	SSR
APPROVED BY	-
HOR. SCALE	NTS
VERTICAL	NTS
RELEASED FOR CONSTRUCTION	
DATE	



**THE CITY OF WINNIPEG  
PUBLIC WORKS DEPARTMENT**

ATTACHMENT CONFIGURATIONS FOR MEDIUM DUTY STRUCTURES - 8', 12' & 16' ARMS

CITY DRAWING NUMBER	N/A
SHEET	5 OF 17
CONSULTANT DRAWING NUMBER	N/A

G:\CAD\125954\Contract\POLE CONFIGURATIONS.dwg